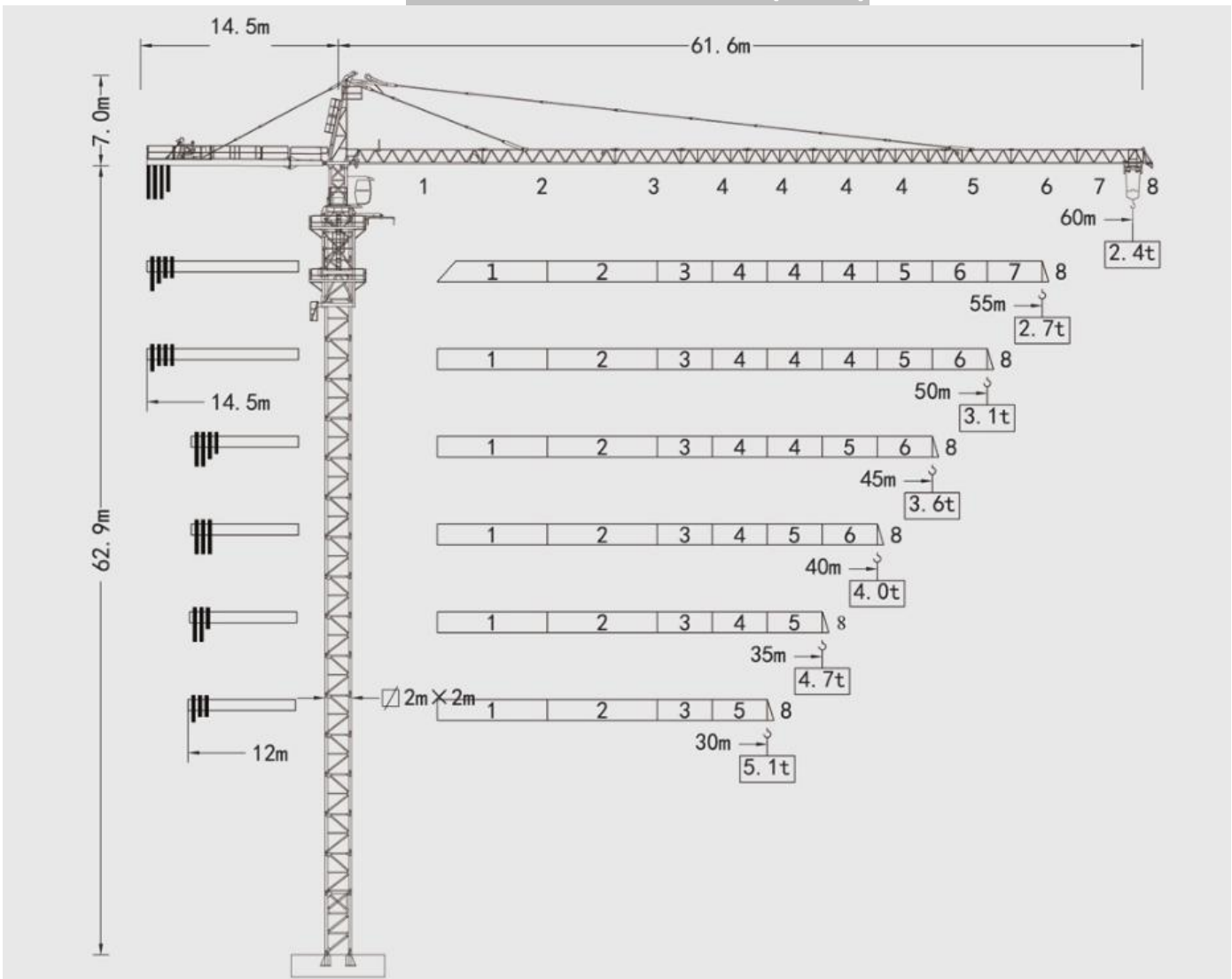


# ZZF Industri Indonesia PT

## TOWER CRANE QTZ160(6024)



### 平衡重 Blance Weight

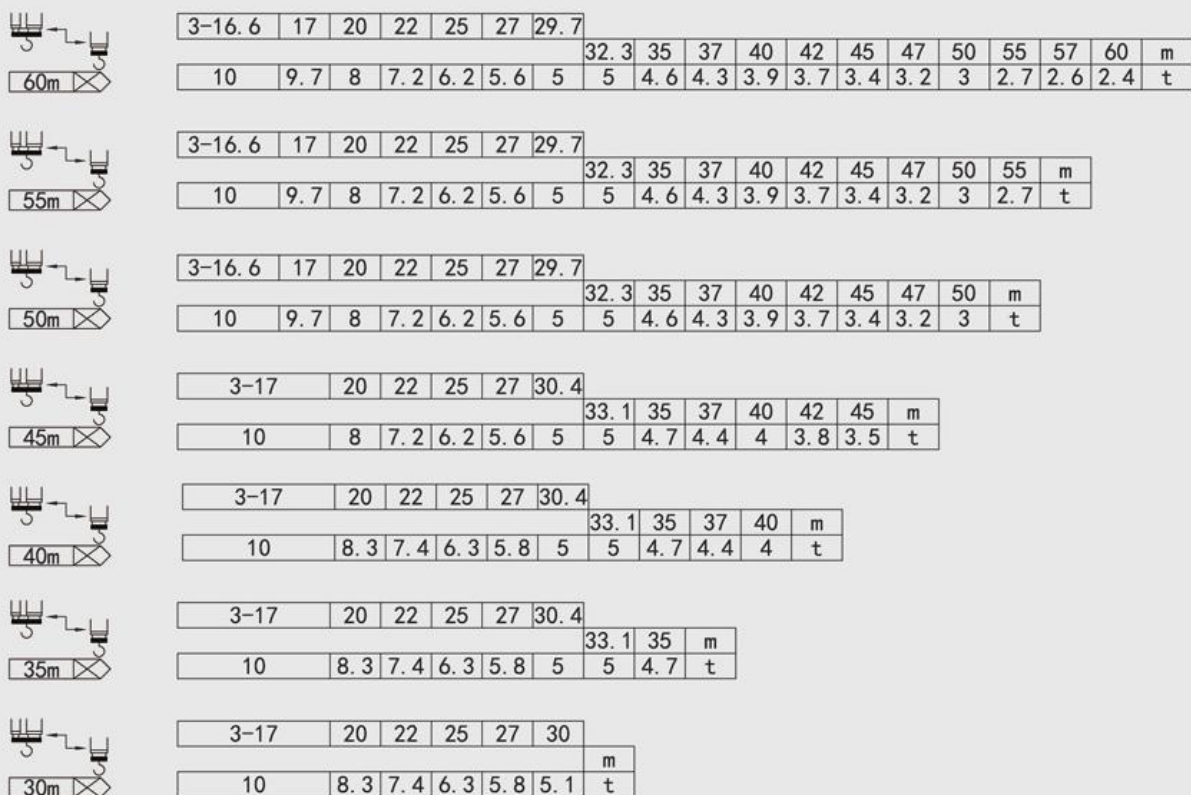
Diagram 1	Diagram 2	Diagram 3	Diagram 4	Diagram 5	Diagram 6
60m	14.5m	$3A+1B=18.6t$	40m	12m	$3A=14.4t$
55m	14.5m	$1A+1B+2C=15.8t$	35m	12m	$2A+1C=13.0t$
50m	14.5m	$1B+3C=14.4t$	30m	12m	$1B+2C=11.0t$
45m	12m	$2A+1B+1C=17.2t$	● A=4.8t B=4.2t C=3.4t		

### 基础载荷 Foundation Load

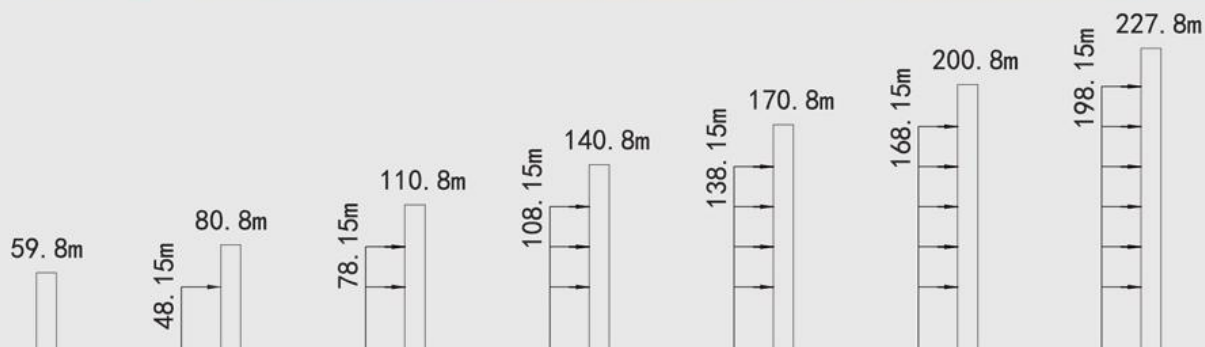
	V (KN)	Mk (KN · m)	M (KN · m)	F1 (KN)	F2 (KN)	
● 工作状态 In service	984	289	34	2068	1021	529
■ 非工作状态 Out of service	824	0	175.7	5625	2316	1904
● 工作状态 In service F 反力 Reactions						

垂直力 V  
倾翻力矩 M  
扭矩 Mk  
水平力 H

## 负荷特性 Load Diagrams



## 附着 Anchorages



## 机构 Mechanisms

起升 Hoisting		倍率Fall	/				
		速度Speed	m/min	0~45	45~90	0~22	22~45
		起重量Load Capacity Weight	t	5.0	2.5	10	5.0
		功率Power	KW	45			
变幅 Trolleying		速度Speed	m/min	0~63			
		功率Power	KW	5.5			
回转 Slewing		速度Speed	r/min	0~0.7			
		功率Power	KW	5.5×2			
顶升 Jacking		速度Speed	m/min	0.55			
		工作压力Operating Pressure	MPa	35			
		功率Power	KW	11			
总功率 Total Power			KW	61.5(不含顶升机构)			